

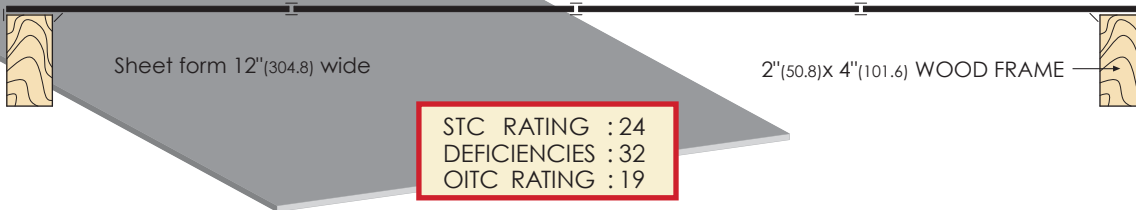
**STC 3003 - 1/16" (1.5mm)**



**Sound Transmission COEFFICIENT**

Frequency	STC
125 Hz	10 db
250 Hz	10 db
500 Hz	16 db
1000 Hz	19 db
2000 Hz	24 db
4000 Hz	31 db
<b>Sound Trans. Class:</b>	<b>19</b>

**STC 3003 - 1/8" (3mm)**



**Sound Transmission COEFFICIENT**

Frequency	STC
125 Hz	14 db
250 Hz	15 db
500 Hz	20 db
1000 Hz	23 db
2000 Hz	37 db
4000 Hz	33 db
<b>Sound Trans. Class:</b>	<b>24</b>

Sound Control

**STC 3003 SOUND SHEET Sound Barrier**

offers OEM manufacturers a lighter-weight, high-performance alternative to conventional sound core materials in their acoustical doors. Suitable for layering during construction, SOUND SHEET is a fireproof INTUMET™ intumescent material that acts as a dense sound barrier layer. It is nearly as effective as solid lead in stopping the transmission of sound and can dramatically increase STC values. As the STC 3003 material weighs much less than lead, it provides major cost savings in shipping, as well as easier manufacturing and installation.

Available in standard black color sheets, size of 12" (304.8) x 96" (2438.4) or 36" (914.4) x 84" (2133.6) and in various thicknesses: 1/16" (1.5), 1/8" (3), 1/4" (6.3), and 3/8" (9.5).

This product has been tested in metal doors up to STC 56, as well as wood doors up to STC 46 for 1 3/4" thick doors.

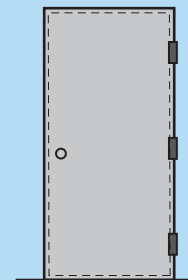
**FOR METAL DOORS**

Use two pieces of 1/4" (6.3) thick STC3003 for a rating of 48 STC.

**FOR PANEL WOOD DOORS**

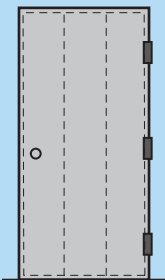
Use one sheet of 3/16" (4.8) thick as part of the core for a rating of 37 STC.

**1 3/4" (44.5) Metal Door with Lead Lining**

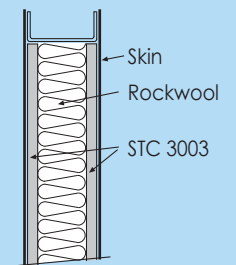


Weight : 360 lbs.  
STC Rating : 56

**1 3/4" (44.5) Metal Door with STC 3003 Lining**



Weight : 280 lbs.  
STC Rating : 55



Door section

